
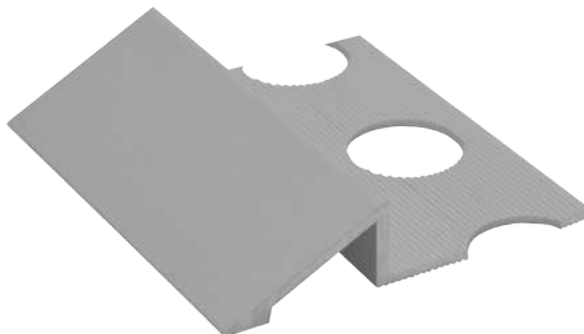




 Importato da GRUPPO STAMPLAST, questo profilo è adatto a raccordare senza gradini due livelli di pavimentazione di differente spessore e/o materiale. La particolare robustezza del profilo consente di resistere a carichi elevati.  
 Materiale: Alluminio.

 RAMP TILE TRIM PROFILE IN ALUMINIUM  
 Imported by GRUPPO STAMPLAST, this profile join floors of different thickness, eliminating the step.  
 It provides transition between floors of different materials. This particularly sturdy profile withstands and supports high loads.  
 Material: Aluminium.

 PROFIL RAMPE DE TRANSITION EN ALUMINIUM

 PERFIL RAMPA DE TRANSICIÓN DE ALUMINIO


 COLORI / COLORS
 
**SCHEDA ORDINE PRODOTTO / PRODUCT ORDER DATA SHEET**

COD.	MOD.				
PRTERMRAMPA10-01	10mm	Satinata	2,5m	50m	0,174 kg/m
PRTERMRAMPA12-01	12mm	Satinata	2,5m	50m	0,178 kg/m

**SCHEDA TECNICA PRODOTTO / TECHNICAL SHEET**

MOD.	A*	B*	H*	H1*
10mm	41,9	21,2	10,0	11,3
12mm	41,9	22,4	12,0	13,3

\*MEASURES IN MILLIMETERS

